

# Skagit County Candidates

## Guide to the 2020 Ballot

Where to File for Office

3

Complete Your Declaration of Candidacy

4

Prepare Your Filing Fee

5

Voters' Pamphlet Instructions

6



# Secretary of State

---

In Washington state, we enjoy a unique tradition of promoting citizen involvement in our political system. Under the provisions of our state constitution, every registered voter has the right to run for office and to have their name appear on the August Primary and November General Election ballots without approval from a political party.

Washington residents also enjoy other special rights, such as the right to initiative and referendum, the right to recall elected officials, and the right to a state Voters' Pamphlet containing detailed information about ballot measures and candidates. These are important tools at the electorate's disposal.

This publication explains state election law relating to filing for office. Please note, this publication is not a substitute for the statutes and regulations governing this process but rather should be read in conjunction with them.

If you have questions or need additional information, please contact your county elections office or the Secretary of State's Elections Division.

We will be happy to assist you.

Sincerely,

Mark Neary  
Assistant Secretary of State

Office of the Secretary of State  
Elections Division  
520 Union Avenue SE  
PO Box 40229  
Olympia, Washington 98504-0229

Phone: (800) 448-4881  
Fax: (360) 664-4619  
Email: [elections@sos.wa.gov](mailto:elections@sos.wa.gov)  
Website: [sos.wa.gov/elections](http://sos.wa.gov/elections)



Alternate document formats are available upon request.

## Checklist - you will need

- Filing Fee - if applicable.
- Voters' Pamphlet photograph, statement, biography

## Where to file

The Secretary of State accepts candidate filings for federal and statewide offices and for any legislative, court of appeals, and superior court offices serving more than one county.

Your county elections department accepts filings for all other offices.

There are three ways you may file:

### 1. Online

For the best possible service, file online at [sos.wa.gov/elections](https://sos.wa.gov/elections). Online filing begins May 11 at 9am and ends May 15 at 4pm. You will need an email address and a credit card.

### 2. By mail

If you file with the Skagit County Elections Department, you may mail your declaration and filing fee to:

Skagit County Elections  
PO Box 1306  
Mount Vernon, WA 98273

We must receive your filing by mail no earlier than April 27th and no later than May 15th, close of business. No exceptions.

### 3. In person

Skagit County Elections is open Monday through Friday from 8:30am until 4:30pm.

700 S 2nd St, Room 201  
Mount Vernon, Washington 98273

## Important dates

|          |  |
|----------|--|
| April 27 | Candidates may file by mail  |
| May 11   | Online and in-person candidate filing begins                         |
| May 15   | All candidate filing ends  |
| May 18   | Last day to withdraw from ballot                                     |
| June 5   | Last day to submit Voters' Pamphlet content                          |
| Aug 14   | Last day for write-in candidates* to submit for the General Election |

\*See write-in candidate rules on page 6.

## Approval

You must provide an email address when you file. This is how we will communicate with you.

Once you have been approved as a candidate for office, an email will confirm your candidacy.

After your filing is approved and your filing fee has been paid, your name will appear on any official list as a candidate for office.

The final ballot order of candidates in your race will be determined by lot draw at the close of business on the last day of candidate filing.

## Qualifications

You must be a registered voter and possess the qualifications specified by law.

If a candidate must be selected by voters from a geographic subdivision of a jurisdiction in the primary, the candidate must be registered to vote within that subdivision. RCW 29A.24.075

Contact the jurisdiction of the office to learn if there are additional qualifications.



### Online filing is fast and easy!

The online filing tool will give you step-by-step instructions, email a confirmation of your filing, alert you when other candidates file in your race, and provide a link to submit your Voters' Pamphlet content.

**File online at [sos.wa.gov/elections](https://sos.wa.gov/elections)**

All candidates must submit a Declaration of Candidacy during the regular filing period. This can be done online or at a laptop available in the Skagit County Elections office.

If you need to file by mail, visit our website to print a paper form to fill out and mail in. Mailed declarations cannot be received by our office before April 27.

## Personal information

Enter your name and address exactly as it appears on your voter registration.

## Campaign information

All candidate information is public information and will be publicly available. For online display of the Who Filed list and Online Voters' Pamphlet, you may choose to display a campaign address instead of your voter registration address.

If you do not provide a campaign mailing address, your voter registration address will be published online in the list of candidates who have filed. It is strongly recommended that you also provide a campaign mailing address, telephone number, website, and email address.

Government offices may not be used for campaign contact information.

## Office information

Choose the jurisdiction, office name and position or district number for which you want to be a candidate.

You are responsible for meeting all qualifications and filing for the correct office. The list of offices open for election is available online.

## Ballot name

Enter your name exactly as you want it to appear on the ballot. Nicknames are acceptable, but the last name must be the name under which you are registered to vote.

Titles denoting occupations, including military rank, positions on issues, political affiliation, symbols, or anything intentionally designed to mislead voters are not acceptable.

## Party preference

If you are filing for a partisan office, you may state the party name you prefer using 18 characters or less.

The first letter of each word of the party preference will be capitalized (example: Progress For All). Acronyms or initialisms will be printed in all caps with or without periods. No changes to party preference will be accepted after the deadline for withdrawal of candidacy.

Your party preference will appear on the ballot and in the Voters' Pamphlet. If left blank, "States No Party Preference" will be printed.

Party preference plays no role in determining how candidates are elected to public office.

Party preference is entirely your decision and does not imply you have been nominated, endorsed, or approved by the party.

Judicial and most local offices are nonpartisan. Do not list your party preference if you are running for a nonpartisan office.

## Filing fee

Your declaration will not be approved until the required filing fee is paid.

Filing fee petitions, submitted in lieu of money by candidates with insufficient funds or assets, must be submitted at the time of filing a declaration of candidacy. No signatures may be submitted later.

All filing fees are non-refundable.

## Oath

You will need to read and approve the oath on your online filing to complete the filing.



### Washington's Top 2 Primary

Washington State's Top 2 Primary is a process of narrowing a field of candidates. The two candidates receiving the highest number of votes cast in a primary race will advance to the General Election ballot. Party preference plays no role in determining how candidates are elected to public office.

You must submit your filing fee when you file for office.

## Cost of filing

The filing fee is based upon the salary of the office.

Offices without a fixed annual salary have no filing fee.

For any office with a fixed annual salary of \$1,000 or less, candidates pay a filing fee of \$10.

For all offices with salaries exceeding \$1,000, candidates pay a fee equal to one percent of the office's fixed annual salary.

Specific filing fees are on the list of offices open for election at [www.skagitcounty.net/elections](http://www.skagitcounty.net/elections)

## Accepted forms of payment

Online filing

- Credit card

Candidates who file in person or by mail with the Skagit County Auditors Office may pay via:

- Check
- Cash
- Money order
- Valid filing fee petition

Filing is not considered official until payment is received.

Filing fees are nonrefundable, even when you withdraw or file for the wrong office.

## Filing fee petitions

Candidates without sufficient assets or income may submit a filing fee petition to pay the filing fee.

Candidates submitting petition signatures may not file electronically.

Filing fees may not be paid by combining petition signatures and currency.

Only signatures of registered voters in the same jurisdiction as the office are valid. Each petition sheet must:

- Be printed on uniform paper size and color
- Include a place for each voter's registration name, address, city, and county
- Provide 20 numbered lines or less
- Display the required warning and statement found in RCW 29A.24.101 and 29A.72.140.

A reproducible filing fee petition form is available online at [sos.wa.gov/elections/candidates](http://sos.wa.gov/elections/candidates).

Petitions must include a total number of valid signatures equal to the dollar amount of the filing fee.

Without the required number of signatures, the petition is insufficient and your Declaration of Candidacy is invalid.

No additional signatures are accepted after initial submission at time of filing.

Petition sheets are not returned to the candidate.

## Online submission

**The submission deadline is 4:30pm on June 5, 2020.**

Submissions or corrections after deadline will not be accepted.

Only candidates for local offices will be included in the Skagit County portion of the Voters' Pamphlet.

You may submit your Voters' Pamphlet information when you file for office or you may submit later. If you choose to submit your Voters' Pamphlet information later, you will receive an email with a link to submit your statement and photo.

Please prepare the following in advance:

- Photograph
- Biography
- Statement
- Campaign contact information

## Questions?

360-416-1702  
voterspamphlet@co.skagit.wa.us

## 1. Photograph

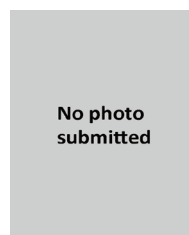
You may submit one self-portrait of your head and shoulders.

Photos must be high resolution and may not be digitally altered.

Clothing or insignias that suggest holding a public office are banned. For example: judicial robes, law enforcement or military uniforms.

A color photo is highly preferred. For best results, use a light-colored background, but not white. Photos must be no more than five years old.

If no photo is submitted, this stock image will be used.



## 2. Biography

In addition to your statement, you may provide a 100-word biography. You must use the following headings, which do not count toward the word limit.

Lists will be combined with semi-colons. If you leave a heading blank "No information submitted" will be inserted next to that heading.

- Elected Experience\*\*
- Other Professional Experience
- Education
- Community Service

\*\*Judicial candidates, use Legal/Judicial Experience instead.

## 3. Statement

Your submission will be for **both** the Primary **and** General Elections.

If you miss the deadline you will not have an entry in the Online or Printed version of the Voters' Pamphlet.

Hyphenated words count as two words. Statements exceeding the word limit will be shortened by deleting full sentences from the end.

**Statement word limit - 200 words.**

Use only *italics* to emphasize words or phrases. Bold, underline, and all caps are not allowed.

Tables, lists, and bullets are not allowed. Text must be written in paragraphs.

### Correct

I approve of justice for all, fairness of the law, and rehabilitation.

### Incorrect

- I approve of:
- JUSTICE for all
  - **Fairness** of the law
  - Rehabilitation

Obscene, profane, libelous, and defamatory language will be rejected.

### Write-in Candidates

If a write-in candidate for the Primary earns enough votes to have their name printed on the General Election Ballot, they may submit Voters' Pamphlet content. The deadline for write-in submissions is August 14.

Should that occur, the opposing candidate will be notified and may submit updated content by the August 14 deadline.

## 4. Campaign Contact Info

The following campaign contact information will be published with your statement:

- Campaign phone number
- Campaign email
- Campaign website

Contact information does not count toward the word limits, but long web addresses such as Facebook or blogs are not allowed. You may update your contact information any time before the Friday after the Primary Election.

Proofread carefully. Your statement and biography will be printed exactly as submitted. Changes after the submission deadline are not allowed.

## Tips from Voters

- Treat this as a resume and edit carefully.
- Offer your vision. Be positive.
- What do you want to accomplish if elected?
- Describe what sets you apart from your opponent.
- Avoid criticism of your opponent.
- Who endorses your candidacy?
- Avoid technical terms and abbreviations.

## After submission

You will receive a confirmation email from our office once we've reviewed your submission. If you do not receive a confirmation notice, contact our office by the submission deadline to ensure that we have received your submission.

General Election Candidates will receive a PDF copy of the voters' pamphlet via email to verify their information. Those who do not respond by the deadline given in the email will be treated as having verified their information.

## Campaign finance info

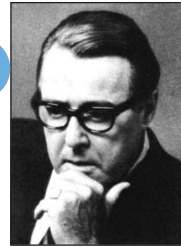
Your campaign finance information is public information. A link to your campaign finance information will appear on your page in the online voters' guide.

Candidates for state or local office should refer to the Washington State Public Disclosure Commission for reporting requirements. Forms and information are available at [pdc.wa.gov](http://pdc.wa.gov).

Candidates for U.S. Senate or U.S. House of Representatives must report campaign finance information to the Federal Election Commission at [fec.gov](http://fec.gov).

## SAMPLE

of the printed voters' pamphlet



**Warren G. Magnuson**  
(Prefers Democratic Party)

1

### Elected Experience

Washington House of Representatives, Legislative District 37.

2

### Other Professional Experience

Farmer/Rancher, Owner of Hailey Company, Inc. our 4th generation family farm. Public service volunteer, Registrar and Attendance Specialist for North Franklin School District, Bailie Memorial Youth Ranch Foundation Board, Director, Past Director of Bailie Memorial Youth Ranch Board, former 4-H leader, PTA President, continuing classroom volunteer. Served as Regional Director for a US Senator.

### Education

Graduate Paschal High School, Ft. Worth, TX. Graduate of Eastern Washington University, 1980. Law degree from Gonzaga University, 1956.

### Community Service

Inland Northwest Humane Society; Walk for Life participant, 11 years; neighborhood watch participant; long time recycler.

3

### Statement

Senator Magnuson has always given the highest priority to advocating for children and families, including veterans, the elderly and disabled. Scourges such as identity theft, methamphetamine users and dealers have been the subject of his legislative efforts to increase penalties and protect victims.

District growth has been more than 30% over the past two years, creating a strain on schools and other services. He helped make difficult choices to balance needs and restrain the budget, working to secure funding for the Pierce County Skills Center in Frederickson, the Yelm Loop, the Cross Base Highway, the Orting Bridge for kids, the Nisqually-Mashel State Park, an upgraded early warning system and work to keep transportation dollars here at home.

Warren advocated for in-home intervention, home health care, support and chore services for children with developmental or behavioral disabilities, seniors and the disabled. He worked to extend the property tax deferral program – helping people whose homes have increased in value, but have not had an increase in income.

He believes the WASL should only be one of several tools used to measure academic success. Warren is honored to represent you and he is and always will be, there for you.

4

### Contact

(509) 123-4567; [warren@magnuson.net](mailto:warren@magnuson.net)  
[www.magnuson.net](http://www.magnuson.net)

## Withdrawal of candidacy

If you decide you no longer want your name on the ballot, A signed withdrawal form must be received by the office where you filed by the end of business on the Monday immediately following Candidate Filing Week (May 20). Candidate withdrawal forms are available at [sos.wa.gov/elections](http://sos.wa.gov/elections).

Filing fees are nonrefundable, even if you filed for the wrong office. (RCW 29A.24.131)

If you file for the wrong office or position, you must withdraw and file again.

## Special filing periods & vacated offices

If a race lacks a candidate after the close of the regular filing period and before the Primary, a special filing period opens for three business days.

Filings during special filing periods are conducted in the same manner as regular candidate filing periods.

If an office is filed for during a special filing period, the race skips the Primary to appear on the General Election ballot. (RCW 29A.24.181)

Withdrawals are not permitted if you filed during a special filing period.

## Campaign signs

Contact the respective agency or department about sign restrictions, permits, and deposits.

State - Department of Transportation (page 9)

County - Public works or transportation department

City - City clerk

# Withdrawal of Candidacy

RCW 29A.24.131

|                              |  |
|------------------------------|--|
| <b>important information</b> | The deadline for withdrawing is the Monday following candidate filing week.<br>Once filed, a declaration of candidacy may not be altered. If the candidate decides during the filing period to change the declaration of candidacy, the candidate must first withdraw and then re-file.<br><b>Note:</b> Filing fees are nonrefundable. |
| <b>office information</b>    | jurisdiction and office name _____ position number <i>(if applicable)</i> _____  |
| <b>personal information</b>  | first name _____ middle _____ last _____   |
| <b>signature</b>             | I withdraw my candidacy for the office listed above and understand that the filing fee is nonrefundable.<br><br>sign here [ _____ ] date here [ _____ ]  |





Transportation Building  
310 Maple Park Avenue S.E.  
P.O. Box 47300  
Olympia, WA 98504-7300  
360-705-7000  
TTY: 1-800-833-6388  
[www.wsdot.wa.gov](http://www.wsdot.wa.gov)

Dear Candidate:

The Washington State Department of Transportation (WSDOT) wishes to take this opportunity to advise political candidates about the placement of campaign signs and placards along state highways.

Revised Code of Washington (RCW) 47.42, the Highway Advertising Control Act, regulates signing on Interstate Highways, primary highways, and highways that are part of the Scenic and Recreational System. Signs erected on private property that are adjacent to these highways must comply with the Highway Advertising Control Act, rules contained in Washington Administrative Code (WAC) 468-66, and applicable local agency sign codes.

In accordance with WAC 468-66-050, ***Sign Classification and Specific Provisions***, temporary political campaign signs are identified and regulated as a type of on-premise sign intended to express a property owner's endorsement of a political candidate or initiative. Prior to placing signs, WSDOT recommends checking with the property owner for approval and to determine property line locations. Campaign signs are allowed under the following regulations:

- 1) Temporary political campaign signs are limited to a maximum size of thirty-two square feet.
- 2) Temporary political campaign signs must be removed within ten days following the election.
- 3) Sign installers must have permission of the underlying property owner prior to placing signs.
- 4) Temporary political campaign signs are subject to all other applicable provisions of RCW 47.42 and WAC 468.66 that pertain to Type 3 on-premise signs.

In addition to the above restrictions, **the erection of temporary political campaign signs within the right-of-way of all state highways is prohibited. Accordingly, signs placed within the right-of-way of any state highway are subject to removal by the Washington State Department of Transportation.**

Also, RCW 47.36.180(1) states in part that it is unlawful to erect any structure, sign, or device visible from a city street, county road, or state highway that simulates any directional, warning, or danger sign likely to be mistaken for such a sign. Therefore, a campaign sign cannot be designated in a manner that resembles an official traffic control sign.

If you should have any questions about placement of campaign signs along state highways, please contact Trevor McCain at 360-705-7282 or email at [mccaint@wsdot.wa.gov](mailto:mccaint@wsdot.wa.gov).

We sincerely hope that candidates for public office will observe the laws and regulations enacted to limit driver distraction, and protect and preserve the roadside beauty of our state. Thank you in advance for your courtesy in this matter.

**Washington State Department of Transportation**